



MIXMASTER

BAFFLED CONTACT TANK

- The most effective High Mixing Disinfection System available
 - .6 baffle factor* equates to up to 4 times the CT per/gal. of a non-baffled tank
 - Perfect choice for chlorine or ozone disinfection
 - Polypropylene liner and inner chamber are non-corrosive
 - Continuous wound fiberglass and resin exterior shell will not corrode
 - Durable injection molded plastic base
- * Testing by Water Quality Association

Model	Total Volume		Height		Diameter		EZ Connection Sch 80	Top Port	Total Weight	
	gal.	ltr.	in.	cm	in.	cm			lbs.	kgs.
BAF 40	40	151	53.4	135.6	16.5	41.8	1-1/4" NPT	1-1/4" FPT	31.0	14.1
BAF 80	90	341	57.0	145.0	24.0	61.4	1-1/4" NPT	1-1/4" FPT	73.0	33.0
BAF 120	119	450	72.1	183.1	24.0	61.4	1-1/4" NPT	1-1/4" FPT	83.5	38.0

100psi / 6.89 bar working pressure 120F / 48.9C working temperature, internal & external



NON-DIAPHRAGM STORAGE/UTILITY TANK

- All threaded ports have stainless steel reinforcing rings
- Polypropylene liner is non-corrosive and adds zero taste or odor
- Continuous wound fiberglass and resin exterior shell will not corrode
- Durable injection molded plastic base
- Perfect choice for storage or pressurized air over water contact
- EZ connection

Model	Total Volume		Height		Diameter		Socket Connection Sch 80	Top Port	Total Weight	
	gal.	ltr.	in.	cm	in.	cm			lbs.	kgs.
FLU30EZ	30	113	42.5	108.0	16.5	41.8	1-1/4"	1-1/4" FPT	23.0	10.4
FLU40EZ	40	151	53.4	135.6	16.5	41.8	1-1/4"	1-1/4" FPT	31.0	14.1
FLU40SQEZ	40	151	36.9	93.8	21.4	54.2	1-1/4"	1-1/4" FPT	33.1	15.0
FLU80EZ	80	302	64.1	162.8	21.4	54.2	1-1/4"	1-1/4" FPT	60.0	27.0
FLU120EZ	119	450	71.5	181.6	24.2	61.5	1-1/4"	1-1/4" FPT	83.5	38.0

100psi / 6.89 bar working pressure 120F / 48.9C working temperature, internal & external



NON-DIAPHRAGM STORAGE TANK WITH SIDE PORTS

- Side ports allow standard air over water or flexible flow application
- All threaded ports have stainless steel reinforcing rings
- Polypropylene liner is non-corrosive and adds zero taste or odor
- Continuous wound fiberglass and resin exterior shell will not corrode
- Durable injection molded plastic base
- Perfect choice for storage or pressurized air over water contact

Model	Total Volume		Height		Diameter		Socket Connection Sch 80	Top Port	Total Weight	
	gal.	ltr.	in.	cm	in.	cm			lbs.	kgs.
FLS40	40	151	53.4	135.6	16.5	41.9	1-1/4"	1-1/4" FPT	31.0	14.1
FLS80	80	302	64.1	162.8	21.4	54.4	1-1/4"	1-1/4" FPT	60.0	27.0
FLS120	119	450	71.5	181.6	24.2	61.5	1-1/4"	1-1/4" FPT	83.5	38.0

100psi / 6.89 bar working pressure
120F / 48.9C working temperature,
internal & external



R.O. STORAGE AND CONTACT TANKS



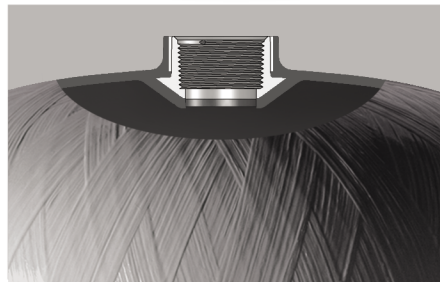


SPECIFICALLY DESIGNED TO BE A WORRY FREE PART OF YOUR WATER SYSTEM



CAD-2 WATER CHAMBER:

- 25 years of exceptional performance under pressure
- Used in all pressurized captive air composite and steel tanks
- 100% butyl rubber diaphragm
- Cross-linked, anti-microbial polypropylene lower chamber
- Industry best sealing system, patented clench ring eliminates separation
- Adds zero taste or odor
- Virtually eliminates condensation
- Oversized to reduce wear for extended life with high volume storage



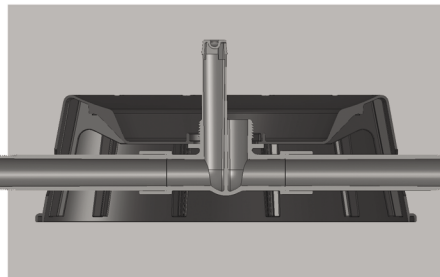
COMPOSITE TANKS:

- Seamless polypropylene liners eliminate top and bottom shell leak issues
- Stainless steel reinforcing rings back up all threaded openings
- Injection molded domes increase shape consistency and strength
- Wetted surfaces made of high quality polypropylene add zero taste or odor
- Continuous wound fiberglass and high temperature epoxy resin external shell eliminate corrosion
- Precision molded rigid PVC bottom fittings



STEEL TANKS:

- Cold rolled steel is precision welded and tested to assure air tight construction
- Industry exclusive ALL stainless steel water connection; NPT female
- Epoxy primer with electrostatic polyurethane paint finish
- Brass air valve



DURABLE INJECTION MOLDED PLASTIC BASE:

- Ribbed for exceptional strength and durability
- Molded bolt holes for seismic and skid mount applications
- Eliminates corrosion
- EZ connection makes storage and contact tank installation quick & EZ

All Flexcon tanks are 100% pressure tested and carry a 5 year limited warranty.



COMPOSITE

MATERIALS OF CONSTRUCTION:

Outer Shell: Continuous wound fiberglass & high temperature epoxy resin
Inner Shell: Seamless, spin welded construction
Connection: NPT male thread, rigid PVC
CAD2 Water Chamber: 100% butyl diaphragm, anti-microbial polypropylene lower chamber
Air Valve: Brass with rubber O-ring seal

RATINGS AND CERTIFICATIONS:

Max working pressure—125psi / 8.62 bar
Max working temp—120 F / 48.9C
WQA-NSF/ANSI 61
WQA-NSF/ANSI 372

Model	Total Tank Volume		Height		Diameter		Connection Size	Weight		Drawdown 10 psi precharge 50 psi supply		Drawdown 10 psi precharge 60 psi supply	
	gal.	ltr.	in.	cm	in.	cm		lbs.	kgs.	gal.	ltr.	gal.	ltr.
FWR015	15	56.7	25.6	65.0	16.5	42.1	1" NPT	20	8.7	9.3	35.1	10.0	37.8
FWR020	22	83.2	34.0	86.4	16.5	42.1	1" NPT	26	11.4	13.6	51.4	14.7	55.6
FWR040	40	151.2	36.5	92.8	21.4	54.5	1-1/4" NPT	38	17.3	24.7	93.4	26.8	101.3
FWR080	82	302.4	51.8	132.0	24.2	61.7	1-1/4" NPT	65	28.0	49.5	187.1	53.6	202.6
FWR0120	120	450.0	72.1	183.1	24.2	61.7	1-1/4" NPT	80	36.3	73.6	278.2	79.6	301.0

20psi/1.38 bar precharge

STEEL

MATERIALS OF CONSTRUCTION:

Outer Shell: Cold rolled and drawn steel
Connection: 304 Stainless Steel
Water Chamber: CAD-2, 100% butyl diaphragm, anti-microbial polypropylene lower chamber
Air valve: Brass with rubber O-ring seal

RATINGS AND CERTIFICATIONS:

Max working pressure—125psi / 8.62 bar
Max working temp—140 F / 60C
WQA-NSF/ANSI 61
WQA-NSF/ANSI 372

Model	Total Tank Volume		Height		Diameter		Connection Size	Weight		Drawdown 10 psi precharge 50 psi supply		Drawdown 10 psi precharge 60 psi supply	
	gal.	ltr.	in.	cm	in.	cm		lbs.	kgs.	gal.	ltr.	gal.	ltr.
SSR015	14	53	22.2	57.0	16.0	40.6	1" NPT	27	12.24	9.3	35.1	10.0	37.8
SSR020	20	76	29.3	74.4	16.0	40.6	1" NPT	40	18.14	12.4	46.9	13.4	50.6
SSR035	33	121	29.3	74.4	21.0	53.3	1-1/4" NPT	54	24.49	19.9	75.2	21.4	80.8
SSR040	44	166	37.5	95.2	21.0	53.3	1-1/4" NPT	65	29.48	27.3	103.1	29.5	111.5
SSR085	85	321	46.0	117.0	26.0	66.0	1-1/4" NPT	118	53.52	52.7	199.2	56.9	215.1
SSR0120	120	450	61.0	155.0	26.0	66.0	1-1/4" NPT	154	69.85	73.6	278.2	78.9	298.2

20psi/1.38 bar precharge

